



# CD94 Monoclonal Antibody

|                           |                                                                                                                                                                                                                                                                                                                                                                                                                                                                                                                                                                                                                              |
|---------------------------|------------------------------------------------------------------------------------------------------------------------------------------------------------------------------------------------------------------------------------------------------------------------------------------------------------------------------------------------------------------------------------------------------------------------------------------------------------------------------------------------------------------------------------------------------------------------------------------------------------------------------|
| <b>Catalog No</b>         | YP-Ab-13813                                                                                                                                                                                                                                                                                                                                                                                                                                                                                                                                                                                                                  |
| <b>Isotype</b>            | IgG                                                                                                                                                                                                                                                                                                                                                                                                                                                                                                                                                                                                                          |
| <b>Reactivity</b>         | Human                                                                                                                                                                                                                                                                                                                                                                                                                                                                                                                                                                                                                        |
| <b>Applications</b>       | WB;FCM;ELISA                                                                                                                                                                                                                                                                                                                                                                                                                                                                                                                                                                                                                 |
| <b>Gene Name</b>          | KLRD1                                                                                                                                                                                                                                                                                                                                                                                                                                                                                                                                                                                                                        |
| <b>Protein Name</b>       | Natural killer cells antigen CD94                                                                                                                                                                                                                                                                                                                                                                                                                                                                                                                                                                                            |
| <b>Immunogen</b>          | Purified recombinant fragment of human CD94 expressed in E. Coli.                                                                                                                                                                                                                                                                                                                                                                                                                                                                                                                                                            |
| <b>Specificity</b>        | CD94 Monoclonal Antibody detects endogenous levels of CD94 protein.                                                                                                                                                                                                                                                                                                                                                                                                                                                                                                                                                          |
| <b>Formulation</b>        | Ascitic fluid containing 0.03% sodium azide, 0.5% BSA, 50% glycerol.                                                                                                                                                                                                                                                                                                                                                                                                                                                                                                                                                         |
| <b>Source</b>             | Monoclonal, Mouse                                                                                                                                                                                                                                                                                                                                                                                                                                                                                                                                                                                                            |
| <b>Purification</b>       | Affinity purification                                                                                                                                                                                                                                                                                                                                                                                                                                                                                                                                                                                                        |
| <b>Dilution</b>           | Western Blot: 1/500 - 1/2000. Flow cytometry: 1/200 - 1/400. ELISA: 1/10000. Not yet tested in other applications.                                                                                                                                                                                                                                                                                                                                                                                                                                                                                                           |
| <b>Concentration</b>      | 1 mg/ml                                                                                                                                                                                                                                                                                                                                                                                                                                                                                                                                                                                                                      |
| <b>Purity</b>             | ≥90%                                                                                                                                                                                                                                                                                                                                                                                                                                                                                                                                                                                                                         |
| <b>Storage Stability</b>  | -20°C/1 year                                                                                                                                                                                                                                                                                                                                                                                                                                                                                                                                                                                                                 |
| <b>Synonyms</b>           | KLRD1; CD94; Natural killer cells antigen CD94; KP43; Killer cell lectin-like receptor subfamily D member 1; NK cell receptor; CD antigen CD94                                                                                                                                                                                                                                                                                                                                                                                                                                                                               |
| <b>Observed Band</b>      |                                                                                                                                                                                                                                                                                                                                                                                                                                                                                                                                                                                                                              |
| <b>Cell Pathway</b>       | Cell membrane ; Single-pass type II membrane protein .                                                                                                                                                                                                                                                                                                                                                                                                                                                                                                                                                                       |
| <b>Tissue Specificity</b> | Expressed in NK cell subsets (at protein level) (PubMed:21825173, PubMed:9430220, PubMed:9485206). Expressed in memory/effector CD8-positive alpha-beta T cell subsets (at protein level) (PubMed:12387742, PubMed:20952657). Expressed in melanoma-specific cytotoxic T cell clones (at protein level) (PubMed:9485206). Expressed in terminally differentiated cytotoxic gamma-delta T cells (at protein level) (PubMed:20952657). KLRD1-KLRC1 and KLRD1-KLRC2 are differentially expressed in NK and T cell populations, with only minor subsets expressing both receptor complexes (at protein level) (PubMed:20952657). |
| <b>Function</b>           | function: Plays a role as a receptor for the recognition of MHC class I HLA-E molecules by NK cells and some cytotoxic T-cells., online information: CD94, similarity: Contains 1 C-type lectin domain., subunit: Can form disulfide-bonded heterodimer with NKG2 family members., tissue specificity: Natural killer cells.,                                                                                                                                                                                                                                                                                                |
| <b>Background</b>         | Natural killer (NK) cells are a distinct lineage of lymphocytes that mediate cytotoxic activity and secrete cytokines upon immune stimulation. Several genes of the C-type lectin superfamily, including members of the NKG2 family, are                                                                                                                                                                                                                                                                                                                                                                                     |



expressed by NK cells and may be involved in the regulation of NK cell function. KLRD1 (CD94) is an antigen preferentially expressed on NK cells and is classified as a type II membrane protein because it has an external C terminus. Three transcript variants encoding two different isoforms have been found for this gene. [provided by RefSeq, Jul 2008],

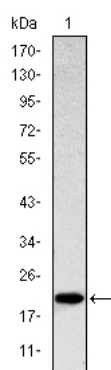
#### matters needing attention

Avoid repeated freezing and thawing!

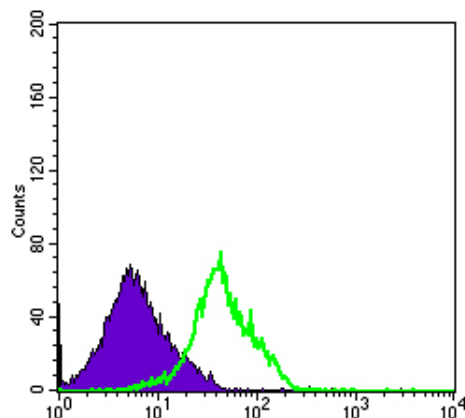
#### Usage suggestions

This product can be used in immunological reaction related experiments. For more information, please consult technical personnel.

## Products Images



Western Blot analysis using CD94 Monoclonal Antibody against recombinant protein.



Flow cytometric analysis of RAJI cells using CD94 Monoclonal Antibody (green) and negative control (purple).

